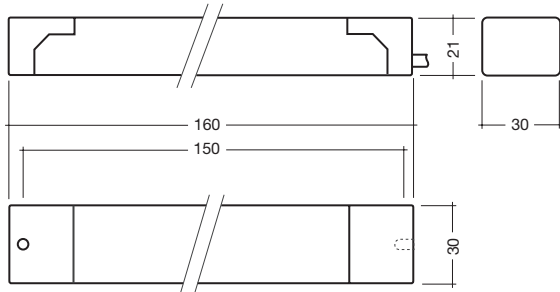


TALEXcontrol LED C350-2 4 channel PWM dimmer



**Highlights:**

- 4 channel constant-current dimming controller for 350 mA TALEXeos modules
- dimming 1 – 100 % ③
- exact load balancing per output channel
- wide input voltage range
- slim housing

**Properties:**

- universal PWM control inputs
- 350 mA current PWM output signal
- suitable for combining with TALEX controls from TridonicAtco
- integrated strain-relief and terminal cover
- connection cable: cross section 0.5 – 1.5 mm<sup>2</sup>
- over voltage shutdown

**Packaging:**  
box of 12

**Designed according to:**  
EN 61347-1  
EN 61347-2-13  
EN 61547  
EN 62384

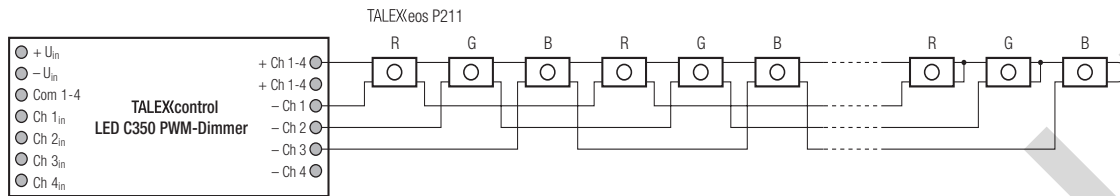
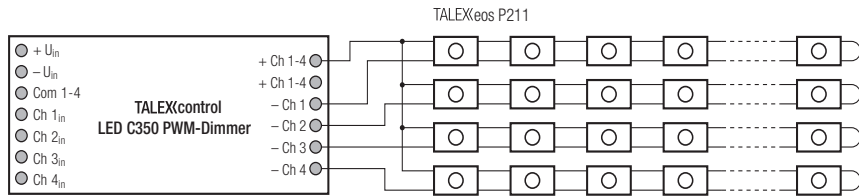
type		LED C350 4 channel PWM dimmer	
article number		86458693	
supply	supply voltage U <sub>in</sub>	V <sub>DC</sub>	24 – 48 (SELV ②)
	max. supply current	A	1.5
control inputs	number of control inputs	–	4xPWM
	input frequency	Hz	120 – 250
	PWM voltage	V	18 – 26
	max. LOW voltage	V	3
	min. HIGH voltage	V	13
	max. current input at 26V	mA	3
output	number of output channels	–	4 (e.g. RGBA)
	output signal ③	–	current-PWM
	output frequency	Hz	120 – 250
	dimming range	%	1 – 100
	output voltage ①	V	24V: 3-20 / 48V: 28-43 (SELV ②)
	output current	A	0.35/channel
	max. cable length (converter → TALEX(module))	m	5
ambient temperature t <sub>a</sub>	°C	-20 → +45	
max. case temperature t <sub>c</sub>	°C	70	
weight	g	55	

① depends on supply voltage U<sub>in</sub> and number of TALEX(module) (U<sub>LED max.</sub> = U<sub>in</sub> – 5V)

② SELV to be provided by the supply unit, e.g. TALEXconverter K211

③ Dimming quality is determined by the PWM transmitter

Wiring examples TALEXeos modules:

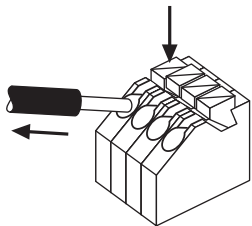


Wiring guidelines

- The cables should be run separately from the mains connections and mains cables to ensure good EMC conditions
- The maximum secondary cable length at the terminals is 5 m. The LED wiring should be kept as short as possible to ensure good EMC

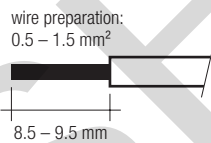
Release of the wiring

Press down the “push button” and remove the cable from front.



Wiring type and cross section

The wiring can be in flexible cable with ferules or solid. For perfect function of the push-wire terminals the strip length should be 8.5–9.5 mm.



 Information about the correct handling of LEDs can be found in the TALEX brochure “Installation instructions and Guidelines” → [www.tridonicatco.com](http://www.tridonicatco.com)