



**OMT 150 – 300 VA 230 – 240/12 V**  
Output 50 – 300 VA

## Product description

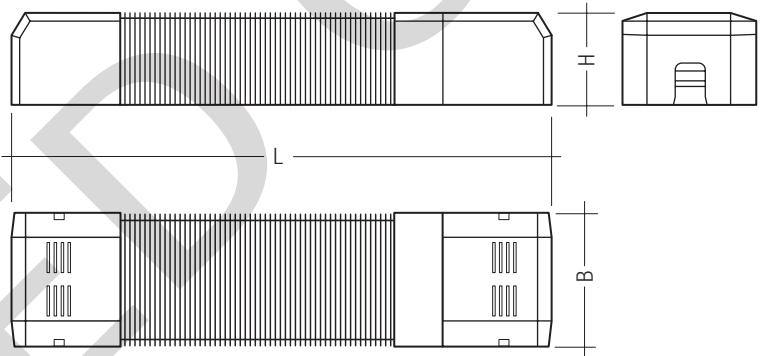
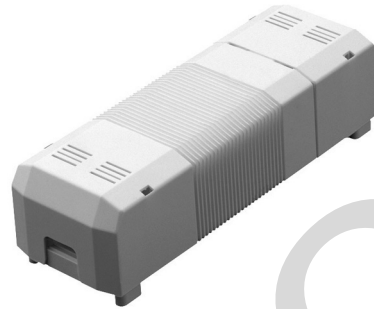
- Fuse and thermal protector
- Dimming by means of symmetrical leading-edge phase dimmer
- Double spring terminal on the primary side, for through-wiring 0.75 – 2.5 mm<sup>2</sup>
- Screw terminal on the secondary side, up to 10 mm<sup>2</sup>
- Insulation class F

## Standards

- EN 61558

## Technical data

|                               |                                    |
|-------------------------------|------------------------------------|
| Rated supply voltage          | 230 – 240 V                        |
| Mains frequency               | 50 / 60 Hz                         |
| Secondary voltage 230 / 240 V | 11.4 – 11.9 V                      |
| Dimming                       | Balanced leading-edge phase dimmer |



## Ordering data

| Type                 | Article number |
|----------------------|----------------|
| OMT 150 A222W 150 VA | 20882035       |
| OMT 210 A222W 210VA  | 20882041       |
| OMT 300 A222W 300VA  | 20882057       |

Packaging OMT 150: 1 pieces/carton, 138 pieces/pallet

Packaging OMT 210: 1 pieces/carton, 126 pieces/pallet

Packaging OMT 300: 1 pieces/carton, 102 pieces/pallet

## Specific technical data

| Type                 | Dimensions<br>LxWxH | Distance between<br>mounting holes | Weight | Rated current<br>230 – 240 V | Lamp power<br>range 230 V | Lamp power<br>range 240 V | Efficiency<br>at full load | $\lambda$<br>at full load | Ambient<br>temperature $t_a$ | Recommended<br>fuse value mA/T | Max. casing<br>temperature |
|----------------------|---------------------|------------------------------------|--------|------------------------------|---------------------------|---------------------------|----------------------------|---------------------------|------------------------------|--------------------------------|----------------------------|
| OMT 150 A222W 150 VA | 233x77.2x65.5 mm    | 190–210x63 mm                      | 2.4 kg | 0.71–0.75 A                  | 70–150 W                  | 140–150 W                 | 88 %                       | 0.93–0.94                 | -20 ... +35 °C               | 1,000                          | 80 °C                      |
| OMT 210 A222W 210VA  | 267x77.2x65.5 mm    | 223–243x63 mm                      | 3.1 kg | 0.99–1.03 A                  | 100–210 W                 | 200–210 W                 | 91 %                       | 0.92–0.93                 | -20 ... +35 °C               | 1,250                          | 80 °C                      |
| OMT 300 A222W 300VA  | 322x77.2x65.5 mm    | 280–300x63 mm                      | 4.2 kg | 1.36–1.44 A                  | 150–300 W                 | 250–300 W                 | 90 %                       | 0.96                      | -20 ... +35 °C               | 2,000                          | 80 °C                      |