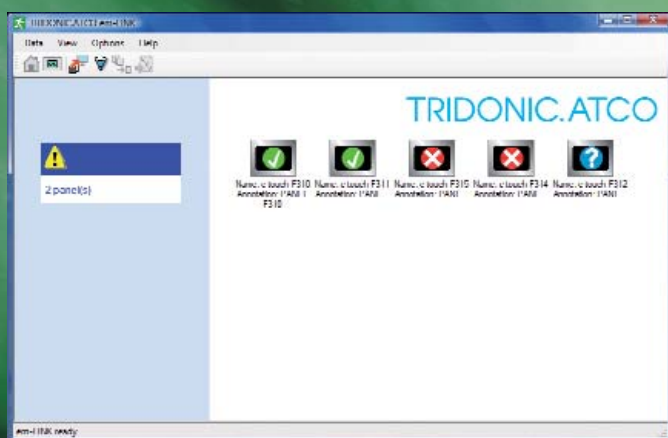


# OPERATING INSTRUCTIONS



# Table of contents

<b>1 About this user manual</b> .....	<b>1</b>
<b>2 Short description of the program</b> .....	<b>1</b>
2.1 System topology .....	2
<b>3 Installation</b> .....	<b>3</b>
3.1 System requirements .....	3
3.2 Installing the program .....	3
<b>4 Starting and exiting the program</b> .....	<b>4</b>
4.1 Starting the program .....	4
4.2 Exiting the program .....	4
<b>5 User interface</b> .....	<b>4</b>
5.1 Overview window .....	5
5.2 Remoteview window .....	6
5.3 Menus .....	7
5.4 Symbols .....	7
<b>6 Configuration</b> .....	<b>8</b>
6.1 Selecting the language .....	8
6.2 Entering customer information .....	8
<b>7 Establishing the connection to e-touchPanel</b> .....	<b>9</b>
<b>8 Monitoring</b> .....	<b>10</b>
<b>9 Managing test protocols/reports</b> .....	<b>10</b>
9.1 Downloading test protocols from e-touchPANEL .....	11
9.2 Generating a report .....	12
9.3 Exporting data to Excel .....	15
<b>10 Remote control</b> .....	<b>16</b>
10.1 Remote control of e-touchPANEL with ›em-LINK‹ .....	16
<b>11 Updating the firmware of the e-touchPANEL</b> .....	<b>17</b>
<b>12 Help in the case of problems</b> .....	<b>18</b>
12.1 e-touchPANEL not responding .....	18
12.2 Keyboard entries via remote control not possible .....	18
<b>13 Replacing an e-touchPANEL</b> .....	<b>19</b>



# 1 About this user manual

This user manual contains all information necessary for operating the ›em-LINK‹ software.

The user manual is intended for technical caretakers, service and support staff, and electricians.

In addition to this user manual, the user manual ›e-touchBOX/PANEL‹ contains important information about the operation and configuration of the e-touchPANEL software.

The following symbols are used in this manual:

Symbol	Meaning
	Notes, further information, comments or useful tips
–	Prerequisite
1.	One step in a sequence of actions
	Single action
<b>bold</b>	Terms and buttons of the user interface

## 2 Short description of the program

**Monitoring** The program ›em-LINK‹ enables the PC-controlled monitoring of all connected e-touchPANEL of an emergency lighting system. The current statuses of the emergency lighting system devices are checked at regular intervals. In the case of errors, warnings are generated that contain the name of the e-touchPANEL and the type of error.

**Managing the test protocols** The relevant standards for emergency lighting systems determine the documentation of test protocols. The program ›em-LINK‹ stores the test protocols of the connected e-touchPANEL in an integrated database when they are downloaded. Thus, ›em-LINK‹ enables you to filter data according to various criteria, to save them in txt format, or to export them in csv format (e.g. to further process them in ›MS Excel‹).



The test protocols can only be retraced if the various e-touchPANEL of an emergency lighting system are not interchanged. A defective e-touchPANEL, however, can be replaced with a new one at any time (see "Replacing an e-touchPANEL", page 19).

**Remote control** With the program ›em-LINK‹ all connected e-touchPANEL can be remote-controlled. The e-touchPANEL are visualized in ›em-LINK‹, so the selected e-touchPANEL can be directly accessed with the mouse.



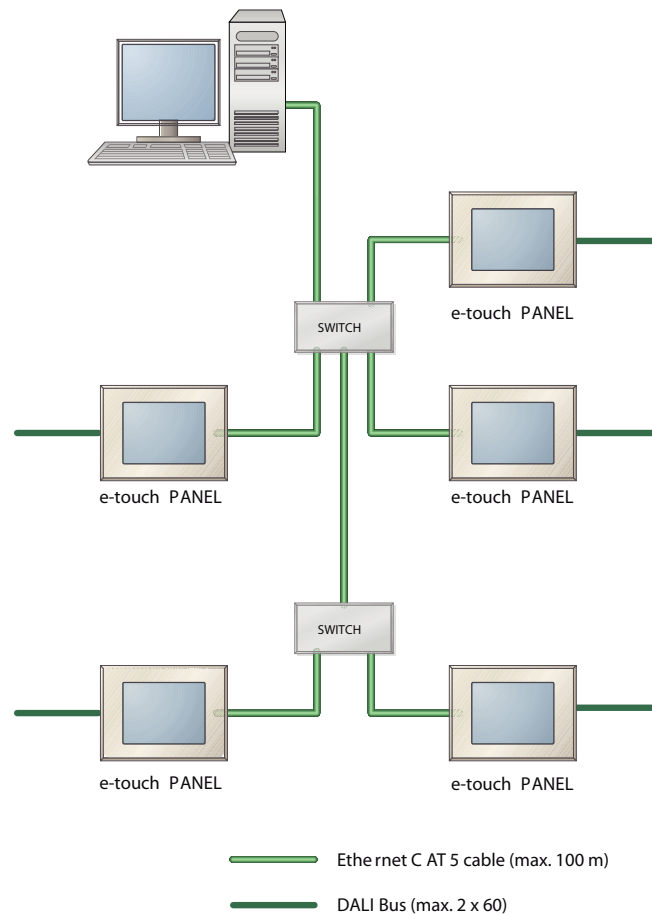
Please refer to the separate user manual ›e-touchBOX/PANEL‹ for the operation and configuration of an e-touchPANEL.

## 2.1 System topology

The PC where ›em-LINK‹ is installed is connected with the e-touchPANEL via an Ethernet interface. The e-touchPANEL are connected with the DALI operating devices with a DALI bus. One e-touchPANEL can access a maximum of 2 x 60 operating devices.



Please observe the information on the Ethernet interface and address allocation in the user manual ›e-touchBOX/PANEL‹.



## 3 Installation

### 3.1 System requirements

In order for the ›em-LINK‹ program to operate at its optimum the following requirements must be met:

PC/laptop	Standard
Operating system	›MS Windows 2000‹ / ›XP‹ / ›Vista‹
Screen resolution	minimum XGA (1024x768 pixels)
Communication	Ethernet connection

### 3.2 Installing the program

You can download the program ›em-LINK‹ free of cost from the Tridonic.Atco GmbH & Co KG homepage ([www.tridonicatco.com](http://www.tridonicatco.com) -> Services -> Download -> ›em-LINK‹).

Apart from ›em-LINK‹ the following programs are required:

- ›MS Access JET Engine‹ (MDAC), version 2.8 or higher
- ›.NET Framework‹, version 2.0 or higher
- ›Java Platform Standard Edition‹, version 6 or higher
- ›MS Internet Explorer‹, version 7 or higher
- ›Adobe Reader‹, version 7



1. Double-click on the **setup.exe** symbol.  
The installation assistant is displayed.
2. Follow the instructions of the installation assistant ›em-LINK‹ **Setup Wizard**.

## 4 Starting and exiting the program

### 4.1 Starting the program



em-LINK

- Double-click on the ›em-LINK‹ symbol to start the program.



In order to keep the performance of the PC and the free storage area at a constant level, TridonicAtco recommends switching off the PC for a short time once a week.

### 4.2 Exiting the program

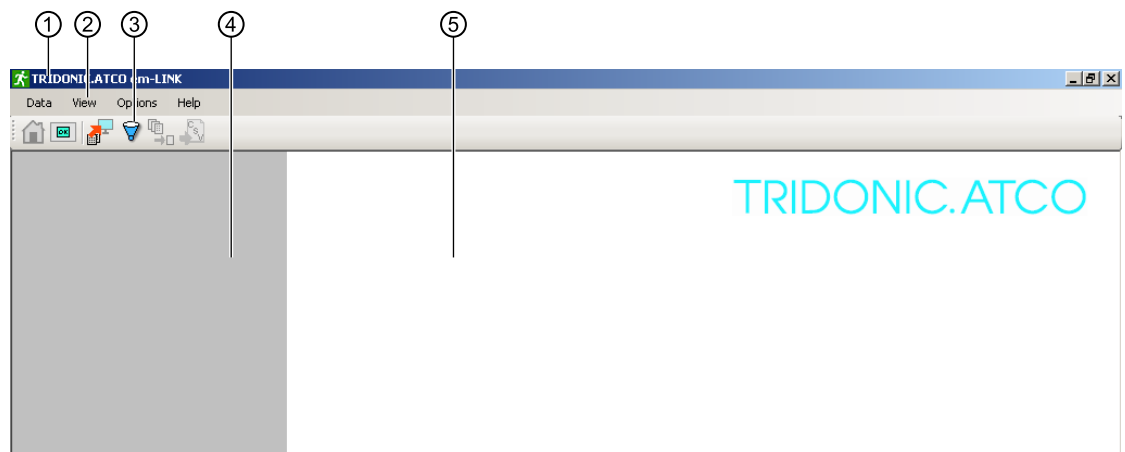
- To exit the program, click on **Quit em-Link** in the **Data** menu.  
The program is closed.



The data you have downloaded from the e-touchPANEL are stored in the program and are available again when the program is restarted.

## 5 User interface

The user interface is divided into an information area and a main area.

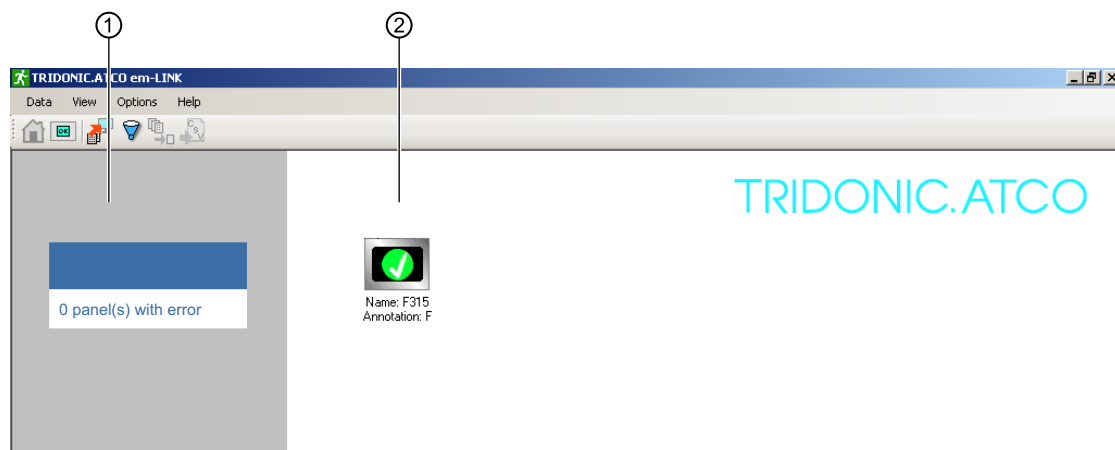


- ① Title bar
- ② Menu bar
- ③ Tool bar
- ④ Information area
- ⑤ Main area

## 5.1 Overview window

The **Overview** window displays those e-touchPANEL in the main area that were entered in the **Panel List Editor** in the ›em-LINK‹. The status, name and annotation are displayed for each e-touchPANEL.

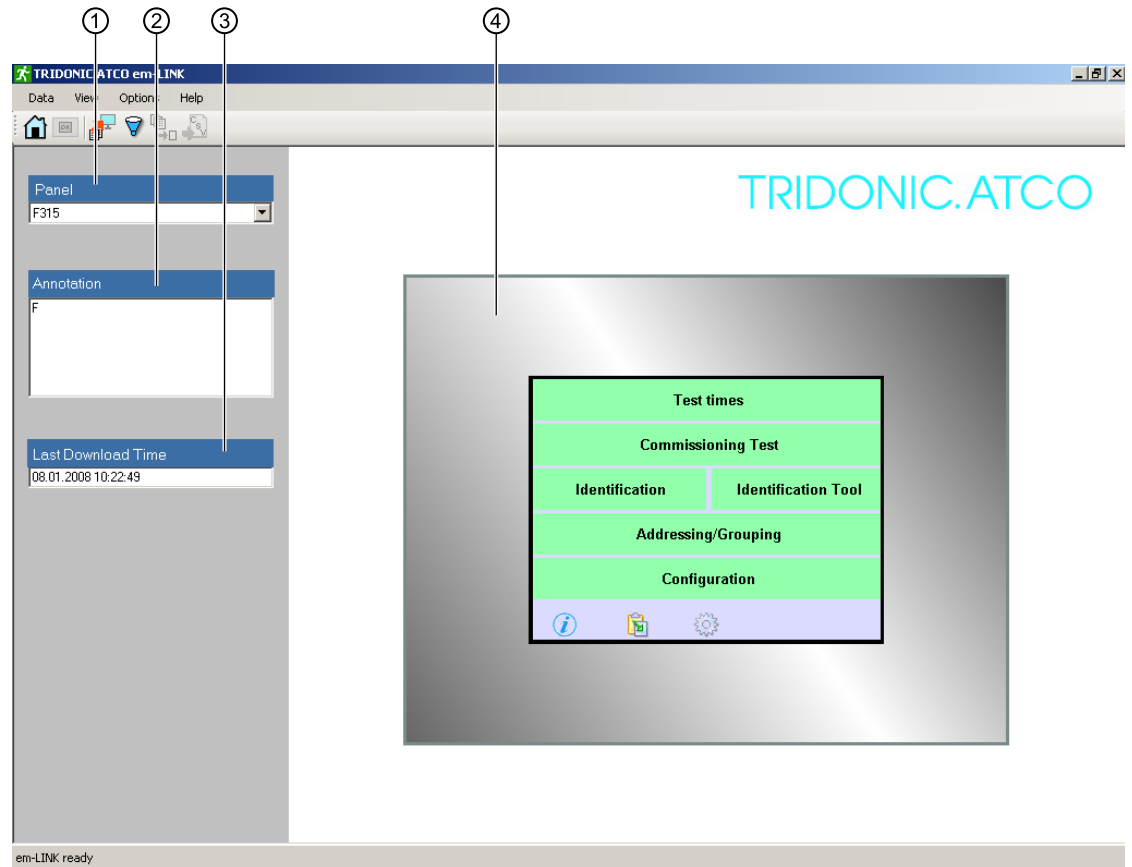
The information area displays a summary of the status of all edited e-touchPANEL. An error is indicated if one or several e-touchPANEL are not connected or if an ›Error‹ is present.



Area	Display	Meaning
① Information area		Status of emergency lighting system: ›OK‹ <ul style="list-style-type: none"> <li>■ All e-touchPANEL connected</li> <li>■ All e-touchPANEL in status: ›OK‹</li> </ul>
		Status of emergency lighting system: ›Error‹ <ul style="list-style-type: none"> <li>■ One or several e-touchPANEL not connected</li> <li>■ For one or several e-touchPANEL the status is: ›Error‹ (e. g. lamp defective, battery fault)</li> </ul>
② Main area		Status e-touchPANEL: ›OK‹
		Status e-touchPANEL: ›Establishing Connection‹
		Status e-touchPANEL: ›No connection‹
		Status e-touchPANEL: ›Error‹

## 5.2 Remoteview window

In the **Remoteview** window, the e-touchPANEL is operated using the keyboard and the mouse pointer.





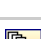



- ① List of e-touchPANEL
- ② Annotation for the selected e-touchPANEL
- ③ Date and time when test protocols were downloaded last
- ④ User interface of the selected e-touchPANEL

## 5.3 Menus

Menu	Command	Meaning
Data	Download from Panel	Downloads the data of the most recently generated test protocols to the database of the program.
	Show Data	Opens the dialog box to select the e-touchPANEL. The corresponding test protocols are displayed.
	Report Wizard	Opens the dialog box for generating a report (a report contains filtered data of the test protocols in txt format).
	Export to Excel	Exports the displayed data in csv format (e. g. for further processing in ›MS Excel‹).
	Quit em-Link	Closes the program.
View	Overview	Opens the <b>Overview</b> window.
	Remoteview	Opens the <b>Remoteview</b> window.
Options	Languages	Sets the program language.
	Properties/Edit Panel List	Opens the dialog box for the connection with e-touchPANEL.
	Properties/Edit Customer Info	Opens the dialog box for customer information.
	Update Panel Firmware	Opens the browser for downloading.
Help	em-Link User Manual	Opens the ›em-LINK‹ user manual.
	About ›em-LINK‹	Provides information about the program ›em-LINK‹.

## 5.4 Symbols

Symbol	Command	Meaning
	Change to Overview	Opens the <b>Overview</b> window.
	Change to Remoteview	Opens the <b>Remoteview</b> window.
	Download Results from Panel	Downloads the data of the most recently generated test protocols to the database of the program.
	Displaying the data in the database	Opens the dialog box to select the e-touchPANEL. The corresponding test protocols are displayed.
	Generate Report	Opens the dialog box for generating a report (filtered data of the test protocols in txt format).
	Export to Excel	Exports the displayed data in csv format, e. g. for further processing in ›MS Excel‹).

## 6 Configuration

### 6.1 Selecting the language

The language of the user interface can be selected in the **Options** menu.

1. Click on the desired language in the **Options/Languages** menu.

You are prompted to restart the program.

2. Exit and restart the program.

The selected language is now used.

### 6.2 Entering customer information

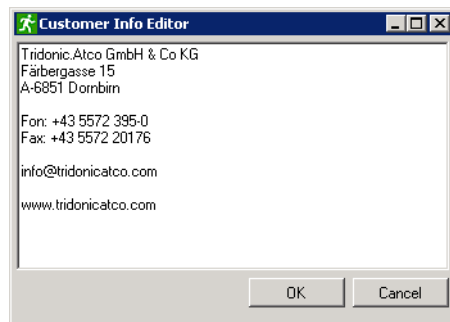
Customer information appears at the beginning of a report and facilitates allocating the reports.

Customer information can be freely entered. A maximum of 360 characters may be used.

1. Click on **Edit Customer Info** in the **Options/Properties** menu.

The dialog box **Customer Info Editor** is displayed.

2. Enter the customer information and confirm with **OK**.



## 7 Establishing the connection to e-touchPanel

In order to establish the connection between ›em-LINK‹ and e-touchPANEL, you have to edit the addresses of the e-touchPANEL in the dialog box **Panel List Editor**.

The **Panel List Editor** contains the following input fields. An input field may contain no more than 80 characters.

Input field	Meaning
Panel Name	You can transfer the <b>Panel Name</b> from the e-touchPANEL or you can assign a name of your choice. The panel name is used to differentiate between several e-touchPANEL. In the e-touchPANEL, the <b>Panel Name</b> is displayed in the <b>System</b> tab of the <b>Configuration</b> menu (see user manual ›e-touchBOX/PANEL‹).
IP Address	The <b>IP Address</b> (protocol address) is required to establish the connection. The IP address is displayed in the e-touchPANEL in the <b>TCP</b> tab of the <b>Configuration</b> menu (see user manual ›e-touchBOX/PANEL‹).
MAC Address	The <b>MAC Address</b> (specific device address) is required to establish the connection. The IP address is displayed in the e-touchPANEL in the <b>TCP</b> tab of the <b>Configuration</b> menu (see user manual ›e-touchBOX/PANEL‹).
Annotation	Annotations on the e-touchPANEL can be entered in the input field <b>Annotation</b> . The annotation appears in the information area of the <b>Overview</b> window and is output in the report.

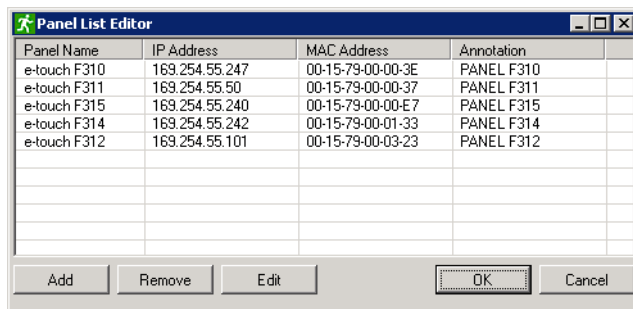


A list that contains the addresses facilitates entries in the **Panel List Editor**. In the **Remoteview** window you can open the **TCP** window for each e-touchPANEL and transfer the addresses to a list (see user manual ›e-touchBOX/PANEL‹, chapter ›Schedule for Ethernet connections‹).

- e-touchPANEL are installed and addressed.
- Addresses of the e-touchPANEL are available.

1. Click on **Edit Panel List** in the **Options/Properties** menu.

The dialog box **Panel List Editor** is displayed.



2. Enter the **Panel Name**, **IP Address**, **MAC Address** and **Annotation** (optional) for the e-touchPANEL.
3. Repeat step 2 if you want to connect additional e-touchPANEL.
4. Click on the **OK** button.

Addresses and annotations are stored in the program. ›em-LINK‹ and e-touchPANEL are now connected.

## 8 Monitoring

**Error message** With ›em-LINK‹, all e-touchPANEL of an emergency lighting system can be monitored centrally. In the **Overview** window, the status of every edited e-touchPANEL is displayed (see "Overview window", page 5).

If an error is indicated you can, e.g., use the remote control to start a test protocol for the corresponding e-touchPANEL in order to analyse the error (see user manual for ›e-touchBOX/PANEL‹, chapter ›Manually testing emergency units‹).

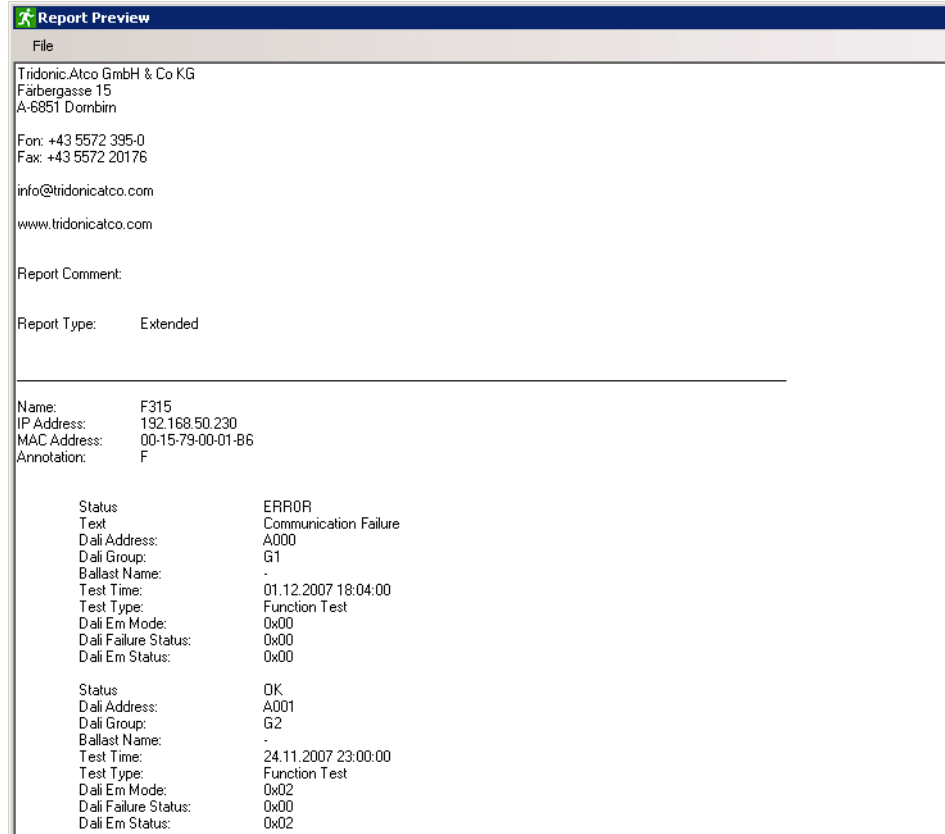
## 9 Managing test protocols/reports

The test protocols of the e-touchPANEL are stored in a database in ›em-LINK‹. This makes it possible to filter the test protocols and to generate different reports (see "Generating a report", page 12). The data display can be stored in txt format (report) or exported in csv format (e.g. for ›MS Excel‹).

**Standard report** The following figure shows an example of a **Standard report**. The report starts with the customer information. In the **Report Comment** section, the annotations from the **Report Wizard** are displayed. Below the report comment, the data for the individual e-touchPANEL are displayed depending on your selection.

Report Preview						
File						
Tridonic.Atco GmbH & Co KG Färbergasse 15 A-6851 Dornbirn						
Fon: +43 5572 395-0 Fax: +43 5572 20176						
info@tridonicatco.com www.tridonicatco.com						
Report Comment:						
Report Type: Extended						
Name: F315						
IP Address: 192.168.50.230						
MAC Address: 00-15-79-00-01-B6						
Annotation: F						
Type:"FT"= Function Test, Type"D " = Duration Test						
Dali Address:	Ballast Name:	Type:	Test :	Status:	Text:	
A000	-	FT	01.12.2007 18:04:00	ERROR	Communication Failure	
A001	-	FT	24.11.2007 23:00:00	OK		
A048	-	FT	16.11.2007 10:38:00	OK		
A047	-	FT	16.11.2007 10:38:00	OK		
A043	-	FT	16.11.2007 10:38:00	OK		
A042	-	FT	16.11.2007 10:38:00	OK		
A040	-	FT	16.11.2007 10:38:00	OK		
A034	-	FT	16.11.2007 10:38:00	OK		
A031	-	FT	16.11.2007 10:38:00	OK		
A030	-	FT	16.11.2007 10:38:00	OK		
A027	-	FT	16.11.2007 10:38:00	OK		

**Extended report** The following figure shows an example of an **Extended report**. In addition to the entries in the standard report, the extended report contains information on the DALI operating devices connected with the e-touchPANEL.



## 9.1 Downloading test protocols from e-touchPANEL

The test protocols of the e-touchPANEL are stored in the ›em-LINK‹ database.

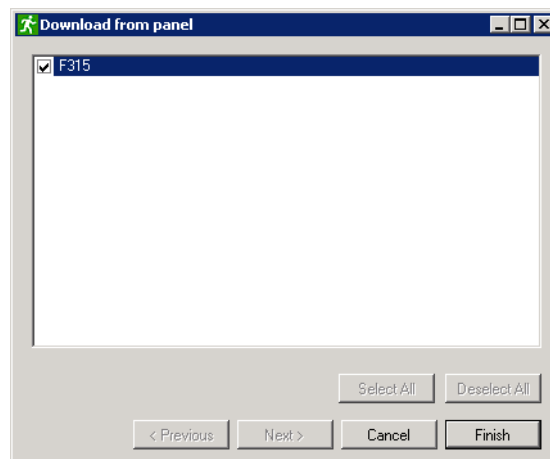


In the case of more than one e-touchPANEL, downloading can take up to several minutes.



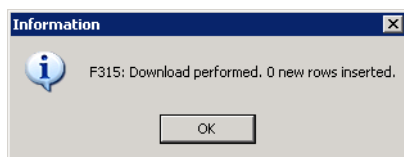
1. Click on the **Download Results from Panel** symbol.

The **Download from panel** window is displayed.



2. Select one or several e-touchPANEL and click on the **Finish** button.

An information window indicates that downloading is completed.



3. Click on the **OK** button.

The test protocols of the e-touchPANEL are now stored in the 'em-LINK' database.

## 9.2 Generating a report

Depending on your requirements, you can generate reports from the test protocols that are stored in the database. You can supplement the data with comments and filter, store or print them. In this way you can generate customer or system-specific reports.

The following filtering criteria are available:

- Selecting the e-touchPANEL
- Only data of the e-touchPANEL where an error message has occurred or data of all e-touchPANEL
- Selecting the time interval
  - Protocols of the last test run
  - All test protocols
  - Test protocols of a specified time interval

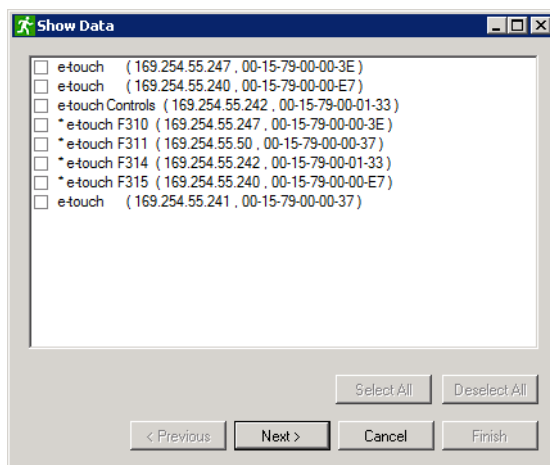
The following paragraph describes how to generate different types of reports.

**Show Data** Select the e-touchPANEL for which you want to generate a report in the dialog box **Show Data**. The currently connected e-touchPANEL are marked with an \*. The e-touchPANEL that were replaced are not marked.



1. Click on the **Show Data from Database** symbol.

The dialog box **Show Data** appears where list of the edited e-touchPANEL is displayed.



2. Select one or several e-touchPANEL.

3. Click on the **Next** button.

The dialog box with the **Last Results** list and the **Show only Errors** check box is displayed.

The following options are possible:

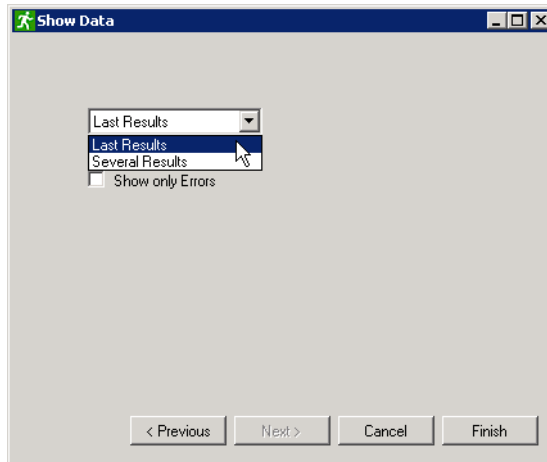
- **Last Results:** The data downloaded last are displayed.  
**Show only Errors:** Only data that contain error messages are displayed.
- **Several Results:** Either all data or the data of a specific time interval are displayed.



Use Drag&Drop to change the sequence of the columns of a report. If you double-click on the entry in a column header, the table after this column is sorted upward or downward.

Displaying the data of the test protocols downloaded last

1. In the dialog box, select **Last Results** from the list.



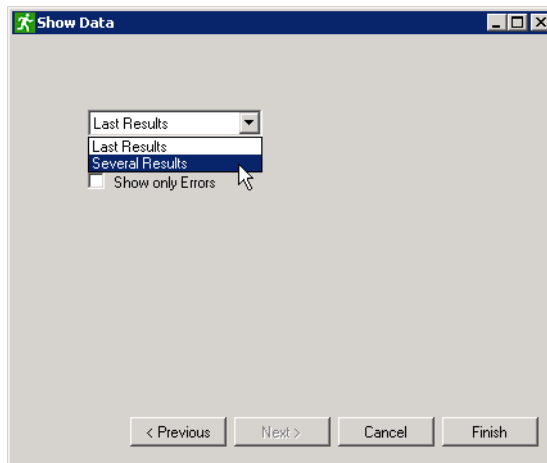
2. Activate or deactivate the **Show only Errors** check box.
3. Click on the **Finish** button.

The data downloaded last are displayed in a table. The dialog box **Generate Report?** is displayed.

Name	Annotation	Status	Failure Text	Test Type	Ballast Name	Dal/Address	Dal Group	Dal Em Mode	Dal Em Status	Dal Failure Status	Test T
F315	F	FEHLER	Kommunikationsfehler	FT	-	A000	G1	00	00	00	01.12.2
F315	F	OK		FT	-	A001	G2	02	02	00	24.11.2
F315	F	OK		FT	-	A040	G1	02	02	00	16.11.2
F315	F	OK		FT	-	A047	G6	02	02	00	16.11.2
F315	F	OK		FT	-	A043	G2	02	02	00	16.11.2
F315	F	OK		FT	-	A043	G1	02	02	00	16.11.2
F315	F	OK		F	-	A043	G5	02	02	00	16.11.2
F315	F	OK		F	-	A043	G5	02	02	00	16.11.2
F315	F	OK		F	-	A043	G2	02	02	00	16.11.2
F315	F	OK		F	-	A043	G1	02	02	00	16.11.2
F315	F	OK		F	-	A043	G4	02	02	00	16.11.2
F315	F	OK		FT	-	A025	G2	02	02	00	16.11.2
F315	F	OK		FT	-	A023	G6	02	02	00	16.11.2
F315	F	OK		FT	-	A021	G4	02	06	00	16.11.2
F315	F	OK		FT	-	A020	G3	02	02	00	16.11.2
F315	F	OK		FT	-	A015	G4	02	06	00	16.11.2
F315	F	OK		FT	-	A010	G5	02	02	00	16.11.2
F315	F	OK		FT	-	A009	G4	02	02	00	16.11.2
F315	F	OK		FT	-	A002	G3	02	02	00	16.11.2

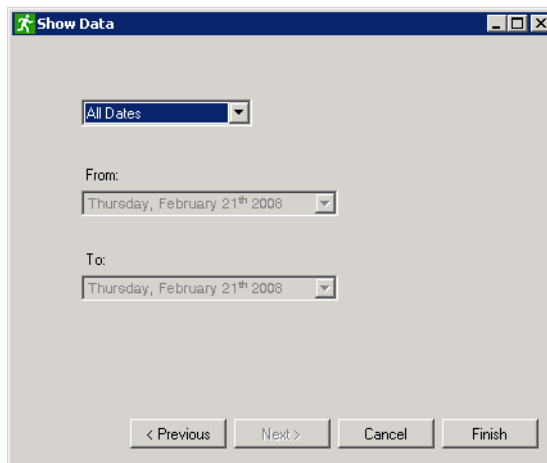
Displaying data of several test protocols

1. In the dialog box, select **Several Results** from the list.



2. Click on the **Next** button.

The dialog box is displayed where you can filter the data further.

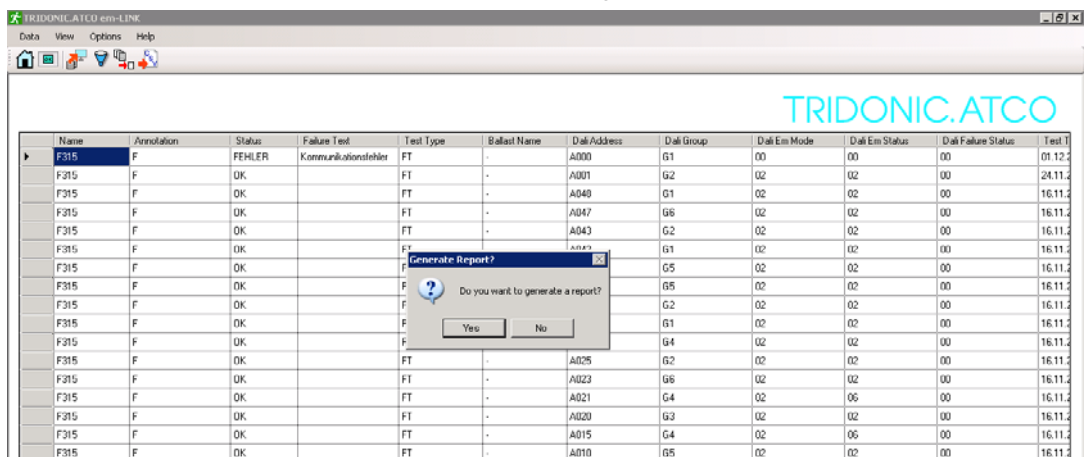


3. In order to generate a report from all displayed data, select **All Dates** from the list and click on the **Finish** button.

- or -

In order to generate a report from the data of a specific time interval, select **Specific Dates** from the list, specify the date, and click on the **Finish** button.

The selected data are displayed in a table. The dialog box **Generate Report?** is displayed.



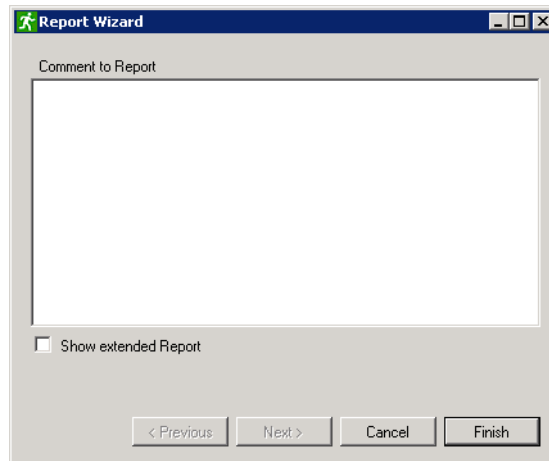
**Generating a report** A comment can be entered for each report.

1. In order to generate a report from the data displayed, click on the **Yes** button.

- or -

Click on **Report Wizard** in the **Data** menu.

The dialog box **Report Wizard** is displayed.



2. You can enter a comment in the input field.

3. Activate the **Show extended Report** check box in order to generate an extended report.

4. Click on the **Finish** button.

The dialog box **Report Preview** is displayed.

5. To save the report, click on **Save as** in the **File** menu.

The report is stored in txt format.

6. To print the report, click on **Print** in the **File** menu.

## 9.3 Exporting data to Excel

You can store the displayed data in csv format and, e. g., further process them in ›MS Excel‹.

– **Show Data** is open.

1. Click on **Export to Excel** in the **Data** menu.

The dialog box **Export to csv File** is displayed.

2. Select the folder and change the file name if required.

3. Click on the **Save** button.

The data are stored in csv format.

## 10 Remote control

›em-LINK‹ enables the configuration and operation of every connected e-touchPANEL. With the remote control, all functions can be accessed using the keyboard and the mouse. The touchscreen of the e-touchPANEL and the user interface of the ›em-LINK‹ are synchronized in real time.



The notes and information in the user manual ›e-touchBOX/PANEL‹ must always be observed! This user manual describes how to configure and operate a e-touchPANEL and how to set time-controlled function and duration tests.

### 10.1 Remote control of e-touchPANEL with ›em-LINK‹

– ›em-LINK‹ and e-touchPANEL are connected.

➤ Click on the **e-touchPANEL** symbol in the **Overview** window.



Name: A11  
Annotation: F156

- or -



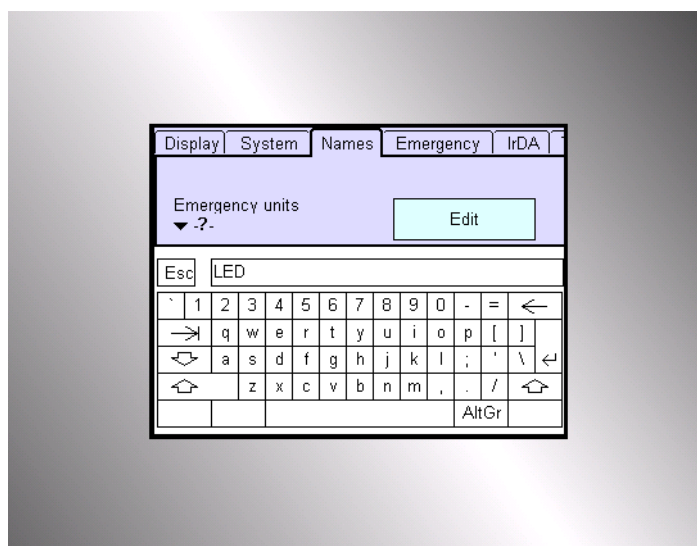
Select the name of the e-touchPANEL in the **Panel** list of the **Remoteview** window.

The active window of the selected e-touchPANEL is displayed in the main area of the **Remoteview** window.



Click on the screensaver of the e-touchPANEL if the screensaver is displayed. The window that was open last appears.

In the **Remoteview** window, entries can be made directly via the keyboard. Click on a letter/number in the displayed keyboard to activate the keyboard input.



## 11 Updating the firmware of the e-touchPANEL

With ›em-LINK‹ you can update the firmware of the e-touchPANEL. The currently valid firmware is available on the TridonicAtco homepage (www.tridonicatco.com).

- The current firmware is stored locally.
- The e-touchPANEL whose firmware you wish to update is marked in the **Overview** window.

1. Click on the e-touchPANEL symbol in the **Overview** window.



Name: A11  
Annotation: F156

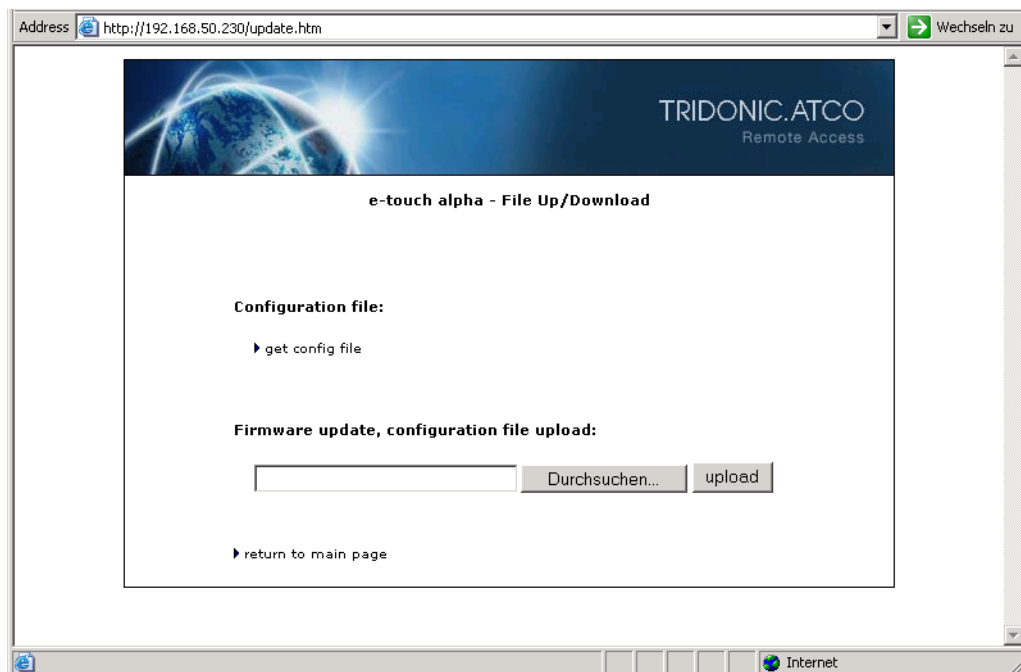
- or -

Select the name of the e-touchPANEL in the **Panel** list of the **Remoteview** window.



2. Click on **Update Panel Firmware** in the **Options** menu.

A browser window is displayed. The name of the e-touchPANEL is displayed (e. g. ›e-touch alpha‹).



3. Click on the **Durchsuchen (Browse)** button and select the firmware file.

The firmware file path is displayed in the input field.

4. Click on the **upload** button.

5. Confirm the security enquiry with **OK**.

The firmware of the selected e-touchPANEL is updated.

## 12 Help in the case of problems

### 12.1 e-touchPANEL not responding

Reason:

- e-touchPANEL is not switched on.
- Connect e-touchPANEL to the power supply.

Reason:

- Cable connected incorrectly.
- Refer to the ›e-touchBOX/PANEL‹ user manual and contact an IT specialist if necessary.

Reason:

- No Ethernet connection
- Refer to the ›e-touchBOX/PANEL‹ user manual and contact an IT specialist if necessary.
- Ensure that the **MAC Address**, **IP Address** and **Subnet Mask** in the **Panel List Editor** match the address of the e-touchPANEL (see "Establishing the connection to e-touchPanel", page 9).
- Ensure that the addressing process for the e-touchPANEL is finished.
- Ensure that no Internet security systems are connected that could inhibit communication (e. g. Firewall).

Reason:

- ›em-LINK‹ is started while the e-touchPANEL are put into operation.
1. Close ›em-LINK‹.
  2. Switch off e-touchPANEL briefly.
  3. Restart ›em-LINK‹.

### 12.2 Keyboard entries via remote control not possible

In the **Remoteview** window no entries can be made via the keyboard (see "Remote control", page 16).

Reason:

- Keyboard interface has not been activated.
- Click on the panel keyboard using the mouse in order to activate the keyboard interface.

Reason:

- ›Java Runtime Environment‹ version is out of date.
- Update ›Java Runtime Environment‹ version.

## 13 Replacing an e-touchPANEL

If you want to replace an e-touchPANEL you can assign the same IP address and the same name for the new e-touchPANEL. The MAC address is device-specific and must be adapted. Replacements are documented and can be retraced since the MAC addresses are given in the test protocols and in the reports.



Within an emergency lighting system the e-touchPANEL must not be interchanged since it is not possible to include this in the test protocols.

1. Replace e-touchPANEL and connect it to the power supply.
2. Connect ›em-LINK‹ and e-touchPANEL (see "Establishing the connection to e-touchPanel", page 9).





a world of bright ideas®

[www.tridonicatco.com](http://www.tridonicatco.com)

1029-0/01/08 We reserve the right to make technical changes without prior notice. No liability can be assumed for the accuracy of data content.

TRIDONIC.ATCO