

# TE DC 2 Current Guard Configuration

## Contents

1. Applications and functions of current guard.....	1
3. Configuration via DALI.....	2
3.1 configTOOL.....	2
3.1.1 Launching configTOOL.....	2
3.1.2 Selecting the advanced settings.....	2
3.1.3 Command sequence.....	2
3.1.4 Loading lists.....	2
3.1.5 COT files.....	2
3.1.6 Automatic processing of the command sets.....	2
3.1.7 Editing COT files.....	2
4. General.....	2

## 1. Applications and functions of current guard

Current guards, also known as current monitoring, protect low-voltage installations against overheating in the event of a short-circuit. Current guards detect any change greater than > 40W and switch off the transformer. The transformer is equipped with a microprocessor-controlled current guard. The output on the secondary winding is measured on the primary side by the current guard during start-up and stored as a reference value. In the case of deviations of +/- 40W from the reference value as a result of an overload, short-circuit or failure of a lamp the light system will be switched off for safety reasons. To switch the equipment back on an action is required by the user (such as a dimming command). If the source of the fault is not removed, the current guard will switch off the transformer within 1 second of it being switched back on. Switching off in the event of an underload prevents the situation in which a possible later short-circuit will not be detected.

**IMPORTANT:** The current guard is activated only after initial referencing. In the as-delivered state of TE DC2 D101 the current guard is not active and therefore offers no protection.

## 2. Configuration of TE DC2 D101 one4all by switchDIM or DSI (DSI-T)

- 1.) Switch off the transformer.
- 2.) Operate the power switch three times (on – off – on – off – on – off). The device must not be in the on state or the off state for more than 1 second. The connected lamp load will be stored as the reference value.
- 3.) To acknowledge correct storage the TE.DC 2 D101 automatically fades from minimum to maximum. This takes about 10 seconds. Any user intervention (such as a dimming command) during this ramp-up will abort the referencing process. This is to protect against unintended operation. When referencing has been successfully completed the TE-DC 2 returns to the minimum dimming level. This completes the start-up operation.

## 3. Configuration via DALI

To adjust the settings via DALI you need to use the configTOOL, which you can find at <http://www.tridonicatco.com> (registration required).

TRIDONIC.ATCO

Language | Imprint | Sitemap | Search

Company

News

Products

Reference projects

Information

Services

Technical Information

Jobs

Contact

subscribe now  
**TALEXx News**

Your Email Address:

Select Newsletter:



Warranty  
Press  
Download  
Software

TridonicAtco and Dialog Semiconductor establish joint development center for energy efficient lighting control

LON/EIB PLUG-INS  
DALI Touchpanel / x/e-touchPLATFORM  
Animations  
TridonicAtco logo

17-12-2009  
ss: CRYSTAL

With TALEXXchain P511-IP67 CRYSTALTridonicAtco is taking white light quality to a whole new level— as brilliant, robust and uniform

Development partnership enhances patent position | as a crystal.

TRIDONIC.ATCO

Language | Imprint | Sitemap | Search

Company

News

Products

Reference projects

Information

Services

Technical Information

Jobs

Contact

/ Services / Download / Software

Vision  
Enterprise Policy  
Management System

TRIDONIC.ATCO | Software



configTOOL V1.5 (Windows, 1.9 MB)

configTOOL is a further development of DALItool and is used to put DALI circuits into operation via a PC. This software also enables device-specific values to be set via DALI. configTOOL supports, among other things, DALI TOUCHPANEL (24035465), EMpro emergency lighting equipment and PCA T5 EXCEL one4all Ip. To connect the PC a DALI USB interface (24138923) and a DALI Power supply e.g. DALI PS1 (24034323) have to be used. The DALI-SCI (24033463) will not be supported. [more info »](#)

## 3.1 configTOOL



ConfigTOOL is a further development of DALItool and is used to put DALI circuits into operation via a PC. This software also enables device-specific values to be set via DALI.

A summary can be found at <http://www.tridonicatco.com> ==> Services ==> Download ==> Software ==> ConfigTool V1.5.(or newest Version)

[/ Services / Download / Software](#)

---

**TRIDONIC.ATCO | Software**

[back to the LIST](#)

**configTOOL V1.5 (Windows, 1.9 MB)**

configTOOL is a further development of DALItool and is used to put DALI circuits into operation via a PC. This software also enables device-specific values to be set via DALI. configTOOL supports, among other things, DALI TOUCHPANEL (24035465), EMpro emergency lighting equipment and PCA T5 EXCEL one4all Ip. To connect the PC a DALI USB interface (24138923) and a DALI Power supply e.g. DALI PS1 (24034323) have to be used. The DALI-SCI (24033463) will not be supported.

[Software Download](#)

<a href="#">Overview configTOOL</a>	835.2 kB
<a href="#">System Requirements for Software Tools</a>	79.0 kB
<a href="#">Windows Vista compatibility of the DALI USB</a>	68.2 kB

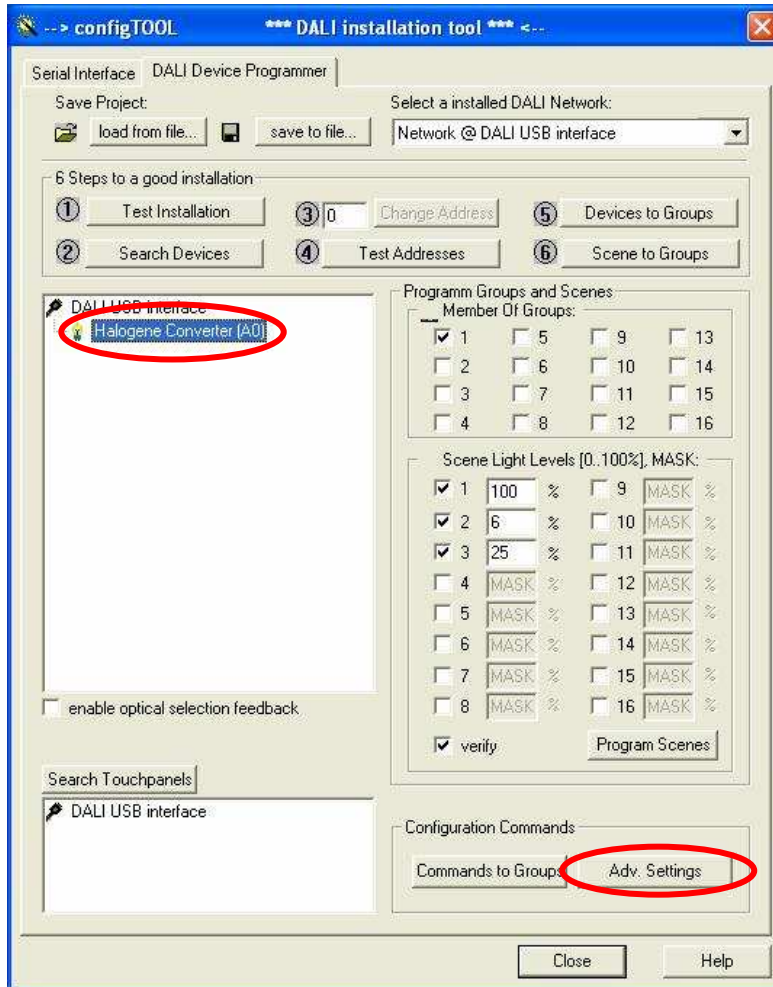
### 3.1.1 Launching configTOOL

After successful installation, launch the configTOOL program and select the “DALI Device Programmer” tab.



## 3.1.2 Selecting the advanced settings

After searching for and selecting the relevant operating device, select “Advanced Settings”.



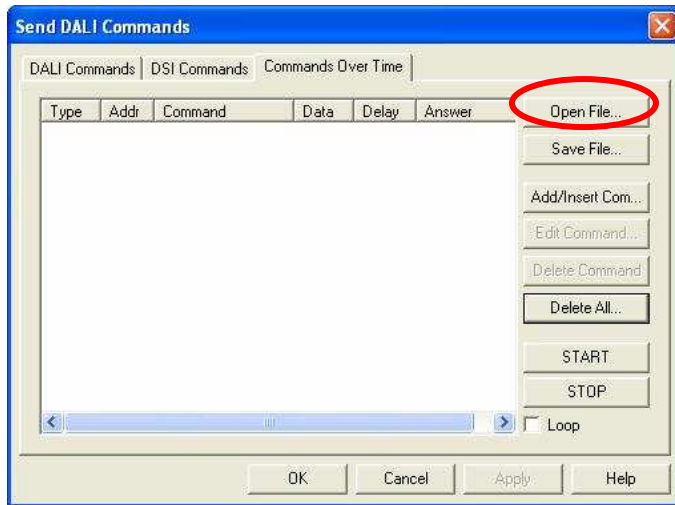
## 3.1.3 Command sequence

Select the “Commands Over Time”



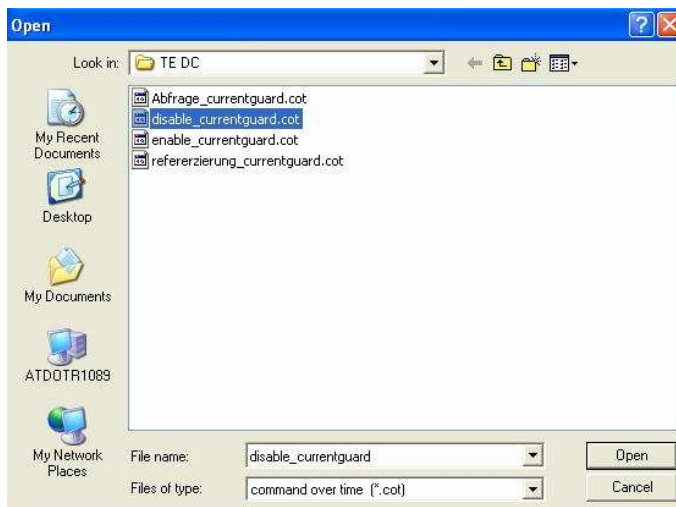
## 3.1.4 Loading lists

Select "Open File"



## 3.1.5 COT files

COT files are predefined files that contain all the command sets, so they are like macros. Select the appropriate COT file in the File dialog box and load it with OPEN



The files are available on request from Technical Customer Service.

### **Explanation of the files:**

Abfrage\_currentguard.cot → The status of the current guard is queried

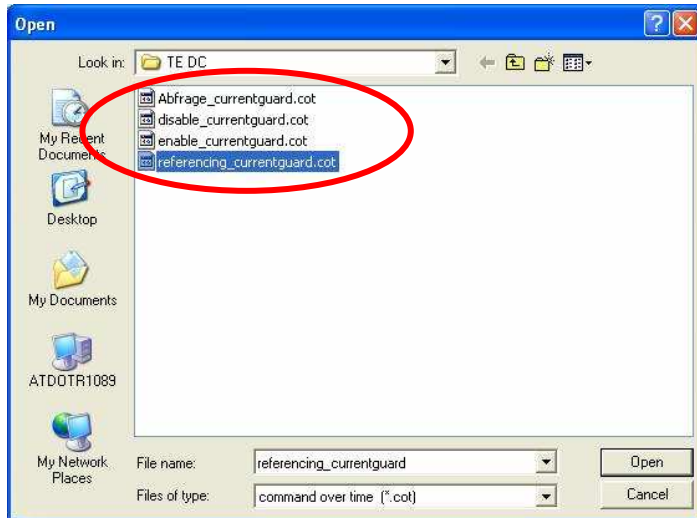
disable\_currentguard.cot → Initialise deactivation of the current guard

enable\_currentguard.cot → Initialise activation of the current guard

referenzierung\_currentguard.cot → Initialise referencing of the load

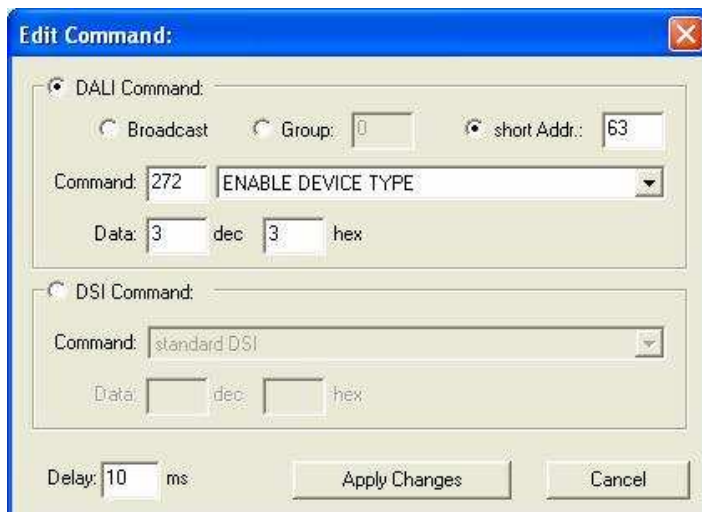
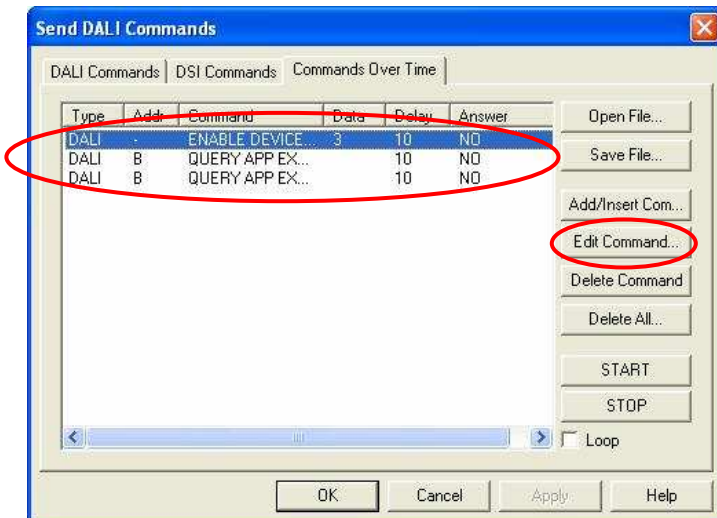
## 3.1.6 Automatic processing of the command sets

When you have selected the COT file the preconfigured command sets are loaded into the selection window. Click on the "START" button to send the command sets automatically and in the correct order to the TE DC 2 D101 one4all.



## 3.1.7 Editing COT files

You can edit the predefined command sets by highlighting the appropriate line in the selection window and then clicking on "Edit Command".



---

## 4. General

---

The data must be transferred in no more than 30 milliseconds otherwise the command will not be understood by TE DC 2 D101 one4all. This time is predefined and is not exceeded.

**Application Engineering**  
**March 2010**